



DUKANE

6600 SS Series

Professional Installation Projectors

Ideal for higher education classrooms and corporate conference rooms

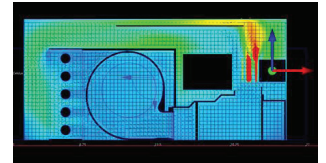
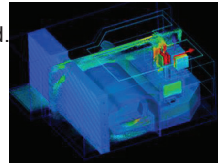
Models 6652WSSB / 6652WUSSB



Versatile, maintenance free entry installation projectors with a reliable laser light source.

No Maintenance Projection Solution

- A sealed LCD cooling system prevents dust from reaching the optics. No filter needed.
- Advanced laser technology delivers a reliable light source up to 20,000 hours



Unique LCD Panel Cooling Design

Powerful Performance

- After startup images appear immediately with breakthrough laser technology
- Brightness adjustment and constant brightness mode maximize laser life and allow for a consistent looking image over an extended period of time
- High performance video processing/scaling supports 4K/30 content
- Integrated software support for Crestron Roomview, AMX Beacon, PJ Link control systems

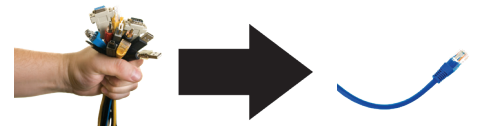
4K UHD
READY

More Flexible Installations

- Lens shift capabilities make alignment easy: (H = +/- 29% / V = 0%~+60%)
- Tilt-free installation capabilities make these projectors ideal for almost any install environment, including portrait orientation
- Horizontal & vertical keystone adjustment along with cornerstone and pincushion provides the ability to square the image to the screen

Built-In HDBaseT Support

Simplify your installations with HDBaseT. Optimized for video applications and supporting uncompressed full HD digital video, audio, ethernet, power and various control signals. With only a single cable (up to 100m) to run, infrastructure and labor costs are reduced, installations are significantly easier, and there is no cable clutter to manage. With uncompressed HD video support, images have never been more stunning.



MultiPresenter

MultiPresenter is application software that lets you display your device's screen (PC, tablet, smart phone, etc.) on the receiver projectors via wired or wireless LAN. MultiPresenter is free and available on Windows, Mac, iOS, and Android. MultiPresenter can send images from your various devices, which enables you to display real-time images with the internal camera or web pages on the smart devices in combination with a file sharing application.

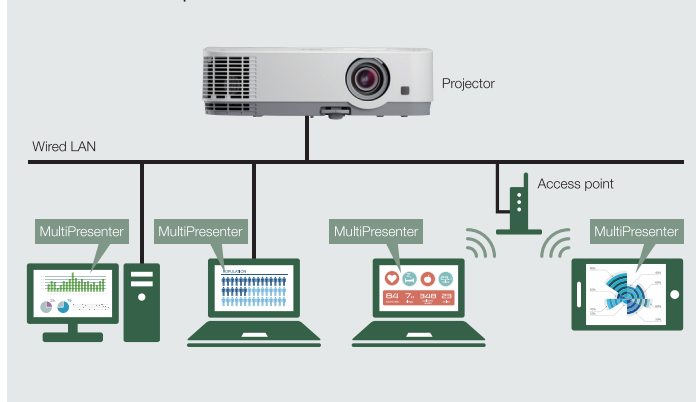
MultiPresenter™

Desktop Version (Win/Mac)

Computer audio and video data (audio can be transmitted only when using Windows) can be transmitted via a wireless or wired LAN.

- **Easy Connection**
Input a 4-digit number (PIN code) for a network connection via wireless LAN.
- **Multiple devices (maximum of 16 screens)** can display at the same time and simultaneously display onto multiple receiving projectors.
- **Projector control**

Connection Example

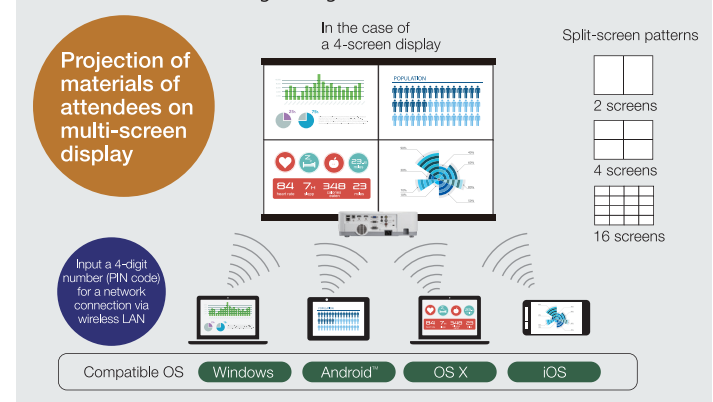


Mobile Version (Android/iOS)

You can transmit files, photos, camera images, files of web pages, and other information stored on Android or iOS devices via a wireless LAN.

- **Easy Connection**
Input a 4-digit number (PIN code) for a network connection via wireless LAN.
- **Multiple devices (maximum of 16 screens)** can display at the same time and simultaneously display onto multiple receiving projectors.
- **Projector control**

Wireless connection image using wireless LAN module



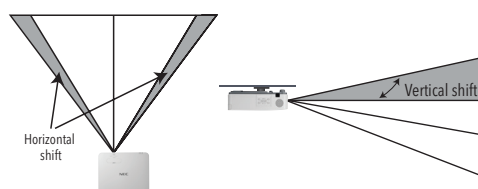
Advanced Networking Capabilities

- Integrated RJ45 connection for quick connection to the LAN (10/100 base-T capability)
- Control and receive important broadcast messages via Crestron Roomview™
- MultiPresenter enables up to 16 wireless devices to be connected to the projector simultaneously with access controlled by the moderator.
- Remote diagnostics enable the user to monitor and make adjustments to the projector remotely
- Simple Access Point Sending photos and documents have never been easier from a computer or iPad.

Advanced Installation Features

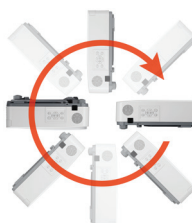
Lens Shift

Lens shift provides greater flexibility when determining install location



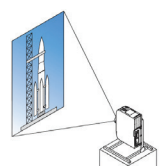
Tilt-free

The projector can be rotated freely (360°) to orient the image depending on the installation requirements



Portrait mode

Allows the projector to be rotated (and screen if necessary) to a vertical alignment so that portrait content can be viewed without black bars on the side when landscape mode is used.



UNIQUE FEATURES

Advanced AccuBlend™ ensures detailed images when non-native resolution sources are connected to the projector

AutoSense™ automatically syncs with any computer signal and features one-touch image optimization

Discreet source keys for source selection

Remote diagnostics enable the user to monitor and make adjustments to the projector remotely

Built-in HTTP page for control and monitoring over a LAN network. Email notification of error messages or lamp end-of-life can be sent to remote locations.

WARRANTY

Registered owners receive a five (5) years or 20,000 hours (that comes first) parts and labor warranty including Peace of Mind for 1 year.

SHIPS WITH

Remote control, batteries, power cord, and a information card.

ACCESSORIES

PRG-UNV	Ceiling mount
NP05LM1	Wireless LAN Module
RMT-PJ39	Replacement remote control
PWRCRD-PJPX	Power cable
RGBCBL-PJPX	RGB cable

ORDERING MODEL NUMBERS

6652WSSB
6652WUSSB



		6652WSSB	6652WUSSB
Display Technology		0.64" LCD w/ MLA	
Light Output (lumens)	Center	5200	
	ECO mode OFF	5000	
	ECO mode ECO	3000	
	ECO mode LONG LIFE	2500	
	Constant Brightness	4000	
Resolution	Native	WXGA 1280 x 800	WUXGA 1920 x 1200
	Maximum	Up to 4K@30Hz (3840x2160) with Advanced AccuBlend, Pixel clock frequency: less than 300MHz (HDBaseT : 300MHz)	
Contrast Ratio (up to)		500,000:1 with Light Adjust	
Laser Life (50%)	ECO mode OFF	20,000 hours	
Screen Size (diagonal)		25 - 300 in. / 0.6 - 7.6m	
Projection Distance		2.6 - 44.3 ft. / 0.8 - 13.5m	
Projection Angle		0 - 10.8° tele / 0 - 17.0° wide	
Lens	Zoom	Manual	
	Zoom Ratio	1.6x	
	Throw Ratio	1.23 - 2.0:1	
	Focus	Manual	
	F-number, focal length	F=1.5~2.1 / f=17.2~27.6mm	
	Shift	Manual (H = +/- 29% / V = 0%~+60%)	
Keystone Correction		+/- 30° horizontal, +/- 30° vertical	
Synchronization Range	Horizontal	15 to 100KHz (RGB: 24kHz or over)	
	Vertical	50 to 120Hz	
Supported Video Standards		NTSC3.58/NTSC4.43/PAL-N/PAL-M/PAL-60/SECAM	
SD/HD Video Signal Compatibility		4K, 1080p, 1080i, 720p, 576p, 576i, 480p, 480i	
PC Signal Compatibility		VGA, SVGA, XGA, WXGA, Quad-VGA, SXGA, SXGA+, WXGA+, WXGA++, WSXGA+, WUXGA	
Macintosh Compatibility		Yes	
Input Terminals	RGB1 (analog)	VGA 15pin D-Sub	
	RGB2 (digital)	HDMI (w/HDCPv1.4)	
	RGB3 (digital)	HDMI (w/HDCPv1.4)	
	RGB4 (digital)	HDBaseT	
	Audio1	Stereo Mini Jack	
	USB Type A	Memory, (2A)	
	USB Type A (behind cover)	Wireless LAN (optional)	
	USB Type B (behind cover)	USB Service	
Output Terminals	Audio Out	Stereo Mini Jack	
Wired LAN port		RJ45 (100Base-TX/10Base-T)	
External Control		RS-232 (D-Sub 9pin), IR, RJ45	
Built-in Speaker		20W (mono)	
Power Requirements		100 - 240V AC, 50/60Hz	
Input Current		5.0A/2.1A	5.1A/2.1A
Power Consumption	ECO mode OFF	320W	330W
	ECO mode ECO	232W	240W
	ECO mode LONG LIFE	234W	242W
	Standby (network)	1.4W	
	Standby (normal)	0.13W	
Installation Orientation		Floor/Front, Floor/Rear, Ceiling/Front, Ceiling/Rear	
Dimensions (WxDxH)		18.9 x 16.0 x 5.6 in. (480 x 407 x 142.5 mm)	
Net Weight		21.3 lbs. (9.7 kg)	
Carton		23.3 x 19.3 x 10.2 in. (591 x 491 x 259 mm)	
Gross Weight		26.9 lbs. (12.2 kg)	
Fan Noise	ECO mode OFF	27dB (HIGH BRIGHT) / 24dB (OTHERS)	
	ECO mode ON	22dB	
Regulations	USA	UL60950-1:2nd edition, 2014, UL62368-1:2nd Edition, FDA, FCC Part15 Subpart B(ANSI C63.4:2014), Proposition65, TPCH	
	Canada	CAN/CSA C22.2 No.60950-1-07, 2nd Edition, 2014, ICES-003 Issue6(ANSI C63.4:2014)	
Operating Temperature		41° - 104°F / 5° - 40°C	
Humidity		20-80% non-condensing	
Storage		14° - 122°F / -10° - 50°C	

Additional accessories are available, including screens, carts, mount accessories and replacement cables. Visit www.dukaneav.com for details.

